

The benefits of MRI

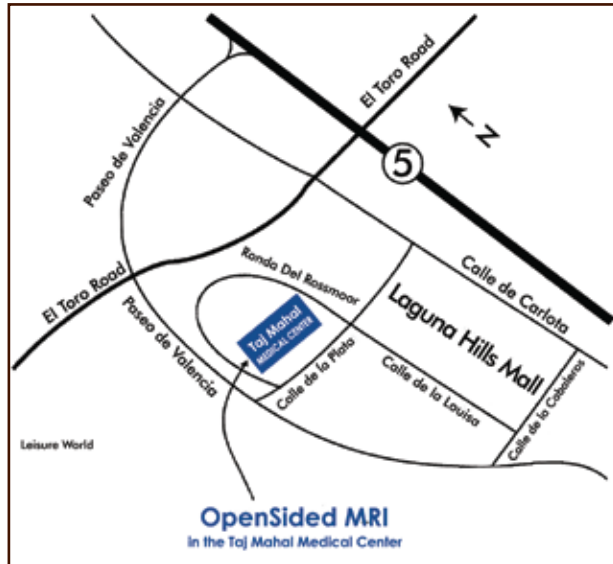
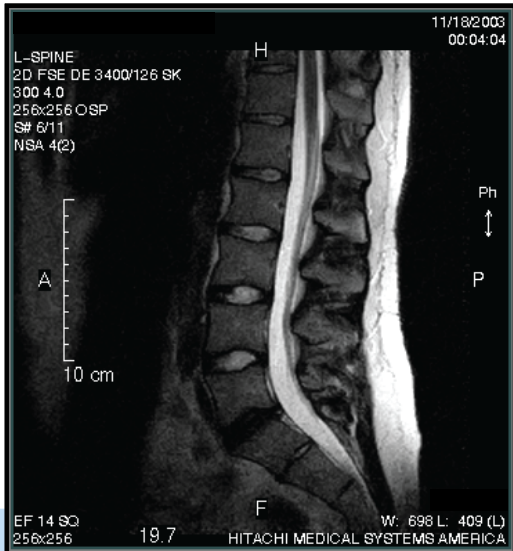
MRI procedure is used for all parts of the body and the following are some of the conditions for effective clinical evaluation.

- Brain disorders
- Traumatic injuries
- Eye abnormalities
- Spine diseases
- Tumor detection
- Liver and other abdominal diseases
- Knee and shoulder injuries
- Musculoskeletal disorders
- Facial/Neck abnormalities
- Infection
- Blood flow and vessel disorders



Appointment Time: _____ : _____ AM / PM

Appointment Date: _____ / _____ / _____



OpenSided MRI of Laguna Hills
Taj Mahal Medical Center
 23521 Paseo de Valencia Suite 113
 Laguna Hills, CA 92653
 Phone: 949.587.0093
 Toll Free: 1.888.288.0093
 Fax: 949.587.0099
www.opensidedmri.com